

PROGRESSIVE

TRI DIM
FILTER CORPORATION

ultra  **x2**

**THIN LINE HIGH
EFFICIENCY FILTERS**



TRI DIM
ENVIRONMENTAL SERIES

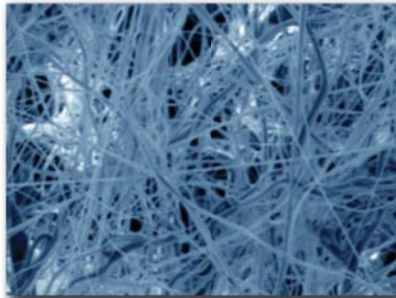
ADVANCED

ultra x2

THIN LINE HIGH EFFICIENCY



ADVANCED - The ULTRA X2 offers a compact design and advanced media. This combination of design and media offers a 2" deep filter that has the performance that in the past has only been available in traditional high efficiency rigid and bag filters.



Magnified view of Ultra Media

ULTRA MEDIA - ULTRA media is a new generation of media that offers unmatched and innovative performance with MERV 14 efficiency with ultra low resistance (0.37" WG) - creating a new industry benchmark for efficiency and energy savings. ULTRA media has proven itself in testing utilizing the ASHRAE

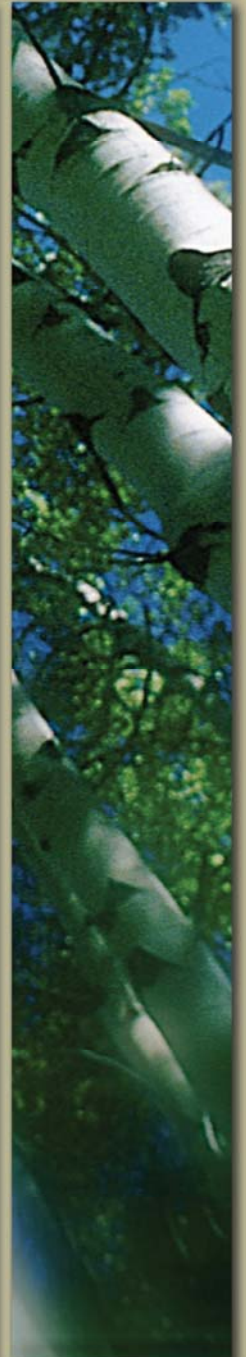
52.2-2007 Appendix J test method.

The ULTRA media has been rigorously tested to document its efficiency, burst strength, water repellency and resistance to Ultraviolet light. ULTRA media is very strong and resistant to moisture (picture right) and proving itself in a burst test - allowing for the ULTRA X2 to be used in challenging applications.



The ULTRA media has also been tested for resistance to Ultraviolet Light and has shown remarkable resistance to destructive UV exposure in laboratory testing.

The ULTRA X2 with the ULTRA media offers the best in high efficiency performance all in a two-inch deep package.



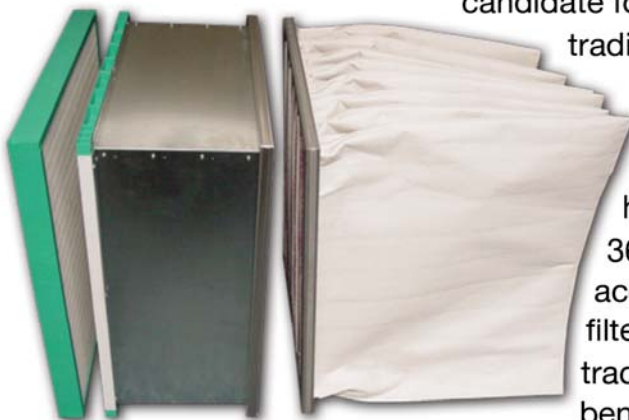
CONSERVATION

FEATURES - The ULTRA X2 features include:

- **Thin Line Design** - minimizes footprint and allows for easy upgrade - only 2-inches of depth
- **Low Pressure Drop** - lowest pressure drop of any equivalent filter, helps to minimize energy consumption
- **Tough and Durable** - The ULTRA media has been proven to be robust - the frame is constructed from tough high impact plastic
- **High Efficiency** - MERV 14 performance per ASHRAE 52.2 Appendix J



UPGRADE AND RETROFIT - The ULTRA X2 offers trusted high efficiency in a thin package - this makes the ULTRA X2 the ideal candidate for upgrading from



traditional pleated filters to a true high efficiency filter. Historically high efficiency filter have required from 12 - 36" of space to accommodate MERV 14 filters - now with a 2" track you can have all the benefits of traditional high

efficiency filters. The ULTRA X2 also has the added benefit of being extremely lightweight and comes packed 6 per case.

RESISTANCE AND ENERGY SAVINGS - The ULTRA X2 offers the lowest resistance of comparable filters - this lower resistance will translate into real energy savings. Even though the energy calculators currently being used by most filter manufacturers grossly over exaggerate the dollar savings - there is no argument that lower resistance equates to less energy used.



Specifications

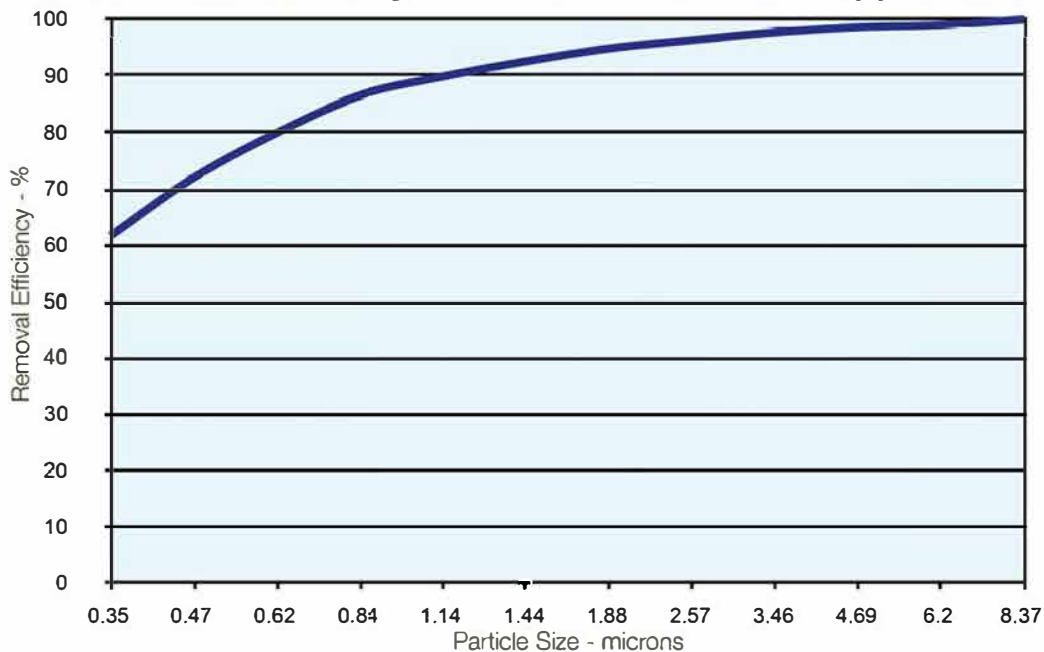
DURABILITY

MEDIA	Hybrid
FRAME	High Impact Plastic
EFFICIENCY - (MERV-A)	MERV 14 (Appendix J)
RESISTANCE	0.37" W.G. @ 500 FPM (92 PA @ 2.54 m/sec)
FINAL RESISTANCE	1.5" W.G (373 PA)

MEETS ANSI/UL-900 REQUIREMENTS

ULTRA X2, as with all mini-pleat filters, should be properly prefiltered and changed at the recommended final resistance of 1.5" WG

Fractional Efficiency vs Particle Size - After Appendix J



Tri-Dim Filter Corporation is committed to continual product development - all descriptions, specifications and performance data are subject to change without notice.

Tri-Dim products are manufactured to exacting criteria - there can be a $\pm 5\%$ variance in filter performance.

Tri-Dim® and Tri-Dek® are Registered Trademarks of Tri-Dim Filter Corporation.



TRI-DIM FILTER CORPORATION
P.O. BOX 466 • 93 INDUSTRIAL DRIVE
LOUISA, VA 23093
(540) 967-2600 • FAX: (540) 967-2835



Local Representation:



204 N. Link Lane #7
Fort Collins, CO 80524
Office: 970-204-4758 Fax: 970-204-4764
Brandon@IndustrialFilterSource.com
IndustrialFilterSource.com

Brochure # 1900-15
Revision: 10/2011

